



25

SECTION 25
IQC & EQA
PROGRAMMES



Seraqual 365: IQC Management Software

The Seraqual 365 IQC Management Software is a peer data QC programme designed for use with Seraqual Controls. It provides a cost effective and comprehensive package for labs who need to manage their daily QC activities on a centralized platform in real time.



SERAQUAL 365

IQC Management Software



Simple, Easy to Use
Peer Comparison
Tool



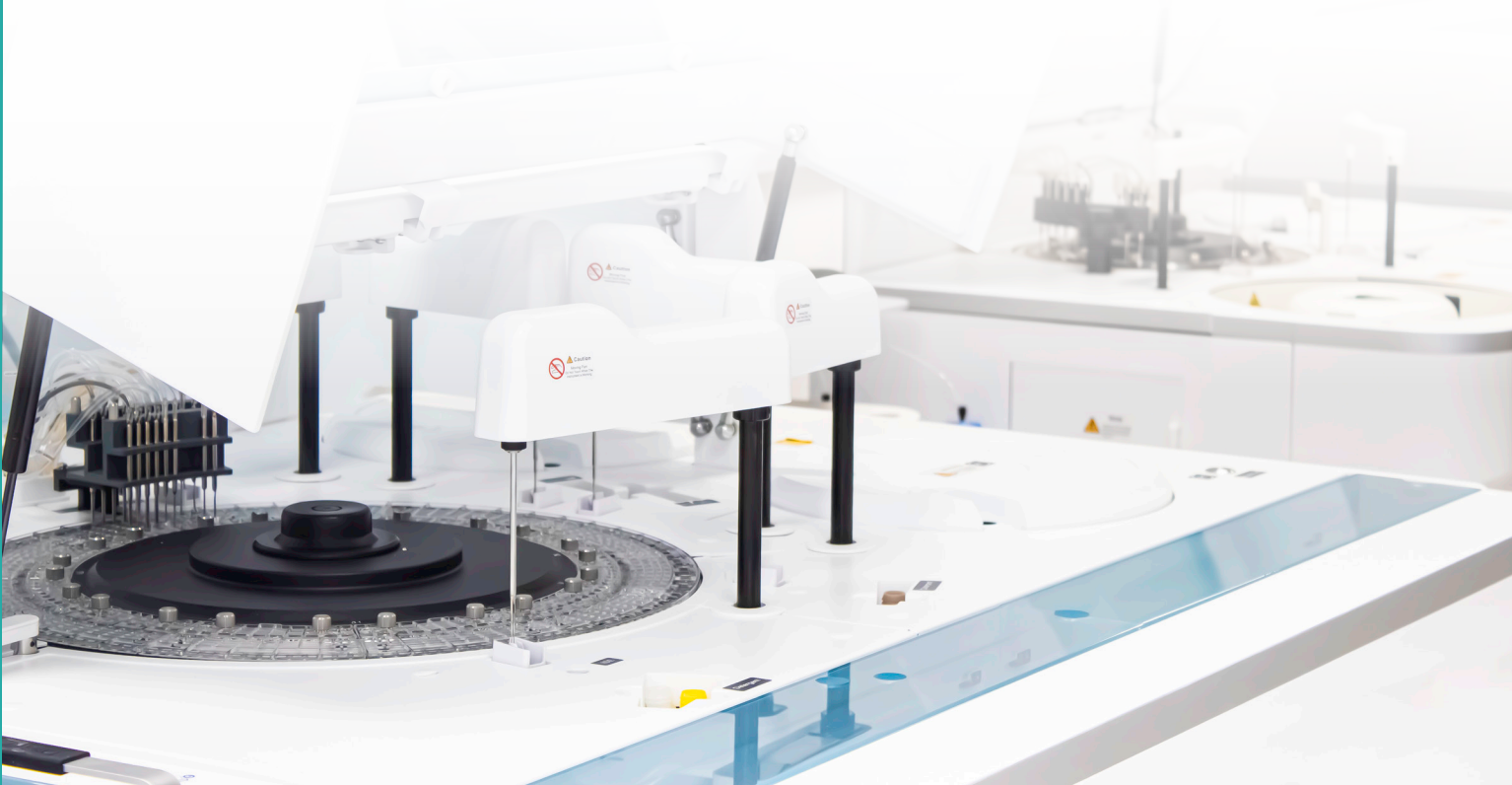
Real Time Data
on a Centralised
Platform



Cost Effective &
Comprehensive QC Data Management
Software

The system has a number of features to enhance data review and trouble shooting within a lab to include:

- **A dashboard interface** that presents a condensed panel of the features of the system showing options most frequented. It also flags any exceptions for review
- **A simple easy to use interface** that allow labs to configure and enter results easily with a need for minimal training
- **Interactive charts** for quick and easy performance review including Histogram and Levey –Jennings
- **Exceptions reports** so data from a specified date range can be reviewed quickly
- **Statistical Comparison Report** can be specified by date range at the instrument, method or all method level.
- **Peer Group Statistics** allowing you to compare your results with other labs using the same QC material
- **Advanced Statistical Analysis** that includes performance indicators such as Uncertainty of Measurement (UM), Bias, Total Error (TE) and Sigma Scores.





Ordering Information

Description	Cycle	Cat No.	Size
Seraqual 365 Internal Quality Assessment Programme	1 Cycle = 12 Months (1 Year License)	SERAQ00P	

Software Overview

1

Dashboard

Presents a condensed panel of the features of the system showing options most frequented.

A full list of features that the system offers is available from the drop down at the top left hand corner.

It also flags any exceptions for review to allow rapid identification of any QC problems and allow quick and effective corrective action.

SERAQUAL 365
IQC Management Software

- QC Tests
- Results Entry
- Charts
- Exceptions Report
- Statistics Comparison
- Peer Group Statistics
- Advanced Statistics Analysis
- QC Data Review

[Instructions for Use \(English Only\)](#)

2

QC Tests

Instrument ID: Cobas
 Location: Chemistry Lab
 Instrument Name: Roche Cobas c311
 Control Type: Clinical Chemistry
 Lots: HSN029 - HSE029

Show: Current Assays All Assays Add Assay

Analyte	Method	Reagent Supplier	Unit	Temperature (°C)	Current?
Acid Phosphatase Prostatic	Naphthyl with Pentandiol	Roche Diagnostics	U/L	37	<input checked="" type="checkbox"/>
Bilirubin Direct	DCA	3P Bioservice S.R.L.	µmol/L	0	<input checked="" type="checkbox"/>
CK	CK-NAC	ABX Horiba	U/L	37	<input checked="" type="checkbox"/>

This option allows a lab to quickly see the instruments registered, the programmes and lots associated with these instruments and then the associated QC test.

Here a lab can also set the Target mean and SD of a test (cumulative, user defined or Seraqual 365 (targets available for selected assayed lots)).

3

Result Entry

A simple feature to allow easy manual addition of results.

An alarm is activated if a result entered violates a multi rule set.

There are also indicators to show when a result has been edited, commented upon or reviewed.

Assay: Acid Phosphatase Prostatic, Naphthyl with Pentandiol, Roche Diagnostics, U/L,37°C Current?

Target Mean/SD

Mean: 0.0000	Mean: 0.0000
SD: 0.0000	SD: 0.0000

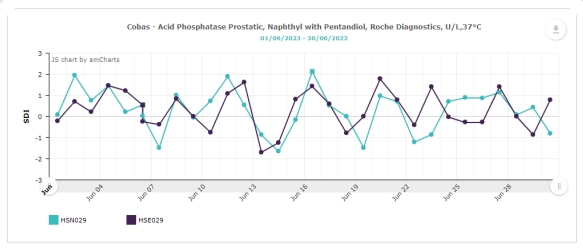
Your Statistics

Results: 192	Results: 192
Mean: 14.9812	Mean: 35.2177
SD: 1.268	SD: 2.643
CV%: 8.46	CV%: 7.51
Bias%: 0.00	Bias%: 0.00

! Rule violation * Edited record ^ Comment ✓ Reviewed Add Result

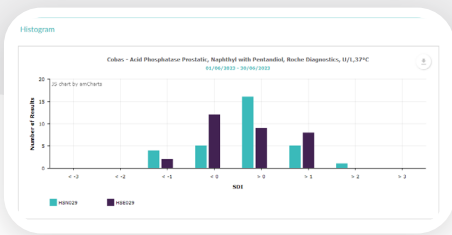
4

Charts



The Levey Jennings and Histograms interactive charts can be generated within a specific date range proving invaluable for identifying data shifts and trends.

The charts can be downloaded, saved, annotated and printed for the users convenience.



5

Exceptions Report

The Exceptions Report presents all results that have violated the multi rules set in a date range that can be specified.

Through colour coding it identifies the violated rules that are 'Alert' and those that are 'Reject'.

Any comments associated with a result are also detailed.

Exceptions Report

Cobas - Chemistry Lab - Roche Cobas c311

Acid Phosphatase Prostatic, Naphthyl with Pentandiol, Roche Diagnostics, U/L, 37°C

HSN029					HSE029		
DATE	TIME	OPERATOR	RESULT	SDI	RESULT	SDI	
06/06/2023	11:06:38	FD	15.4000 10x+	0.5583	36.4000 10x+	0.5382	

Bilirubin Direct, DCA, 3P Bioservice S.R.L., µmol/L

HSN029					HSE029		
DATE	TIME	OPERATOR	RESULT	SDI	RESULT	SDI	
07/06/2023	14:20:48	FD	8.2000 1.2s	2.0474	25.5000	1.8610	

6

Statistics Comparison Report

A worldwide and country comparison of statistics at either the Instrument, Method or All Method level is available in this report.

A date range can be specified.

This report includes performance indicators such as Mean, SD, CV%, Bias %, SDI and CVI.

Statistics Comparison Report

Comparison Level: Instrument

Blood Gas & Electrolytes, Chloride, Enzymatic, Roche Diagnostics, mmol/L

LOT	INSTRUMENT	NO. OF RESULTS			MEAN			SD			CV%			BIAS%			SDI			CVI			
		YOU	COUNTRY	WORLD	YOU	COUNTRY	WORLD	YOU	COUNTRY	WORLD	YOU	COUNTRY	WORLD	YOU	COUNTRY	WORLD	YOU	COUNTRY	WORLD	YOU	COUNTRY	WORLD	
100-01-006	Roche Cobas c311 - Chemistry Lab 2	108	108	108	14.186	14.186	14.186	0.03	0.03	0.03	4.42	4.42	4.42	NA	NA	NA	NA	NA	NA	NA	NA	NA	NA
100-02-006	Roche Cobas c311 - Chemistry Lab 2	108	108	108	72.620	72.620	72.620	1.15	1.15	1.15	1.58	1.58	1.58	NA	NA	NA	NA	NA	NA	NA	NA	NA	NA
100-03-006	Roche Cobas c311 - Chemistry Lab 2	108	108	108	233.267	233.264	233.264	3.41	3.41	3.41	1.46	1.46	1.46	NA	NA	NA	NA	NA	NA	NA	NA	NA	NA

Clinical Chemistry, Acid Phosphatase Prostatic, Naphthyl with Pentandiol, Roche Diagnostics, U/L, 37°C

LOT	INSTRUMENT	NO. OF RESULTS			MEAN			SD			CV%			BIAS%			SDI			CVI		
		YOU	COUNTRY	WORLD	YOU	COUNTRY	WORLD	YOU	COUNTRY	WORLD	YOU	COUNTRY	WORLD	YOU	COUNTRY	WORLD	YOU	COUNTRY	WORLD	YOU	COUNTRY	WORLD
HSE029	Roche Cobas c311 - Chemistry Lab	102	243	243	35.278	35.230	35.230	2.64	2.64	2.64	7.51	7.48	7.48	-0.56	-0.54	0.00	0.00	0.00	1.00	1.00	1.00	1.00
HSE029	Roche Cobas c311 - Chemistry Lab 2	142	243	243	16.168	16.230	16.230	2.03	2.04	2.04	8.83	7.48	7.48	-0.26	-0.26	-0.08	-0.08	0.00	0.00	0.00	0.00	0.00
HSE029	Roche Cobas c311 - Chemistry Lab	162	243	243	14.861	15.171	15.171	1.27	1.62	1.62	8.46	10.69	10.69	-1.26	-1.25	-0.12	-0.12	0.79	0.79	0.79	0.79	0.79
HSE029	Roche Cobas c311 - Chemistry Lab 2	142	243	243	15.122	15.171	15.171	1.66	1.62	1.62	11.14	10.69	10.69	-0.32	-0.32	-0.03	-0.03	1.04	1.04	1.04	1.04	1.04



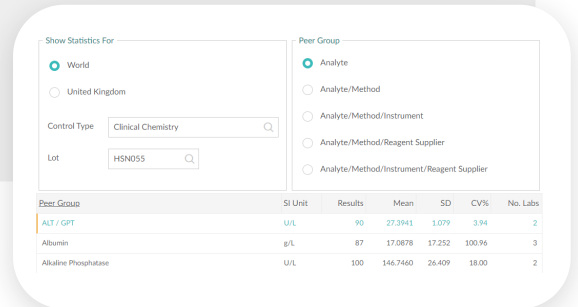
7

Peer Group Statistics

A lab can select World or Country Statistics for a chosen Control Type and Lot.

The peer group can be at a number of different levels as seen in the image.

The report includes Mean, SD, CV% and the number of labs.



8

Advanced Statistics Report

This report draws on a number of important statistical metrics that include Mean, SD, CV%, Uncertainty of Measurement (UM), Bias, TE, Sigma (BV) and Sigma (CLIA).

The report can be based at either the Instrument, Method or All Method Level and if required within a specified date range.

9

QC Data Review

A lab selects a date range (instrument, lot and assay selection is optional) and the report generated displays any results that have not yet been reviewed.

Results violating a multirule are highlighted according to their 'Alert' or 'Reject' status.

A reviewer has the ability to set all the results to reviewed or individually look at results and comment.

This function allow quick and easy identification of tests that may be problematic.

Additional Features

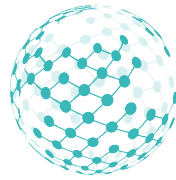
- ✓ Programme available in English, Spanish, Chinese, Farsi and Arabic.
- ✓ Co-ordinators have the ability to look at the Statistics Comparison Report and Advanced Statistical Analysis Report of the labs they are responsible for.
- ✓ Instruction for Use available on the Software
- ✓ Automatic deactivations of peer data to maintain the integrity of the data

For further information please contact admin@seraqual365.com



SEQAS: EQA Management Software

SEQAS is an EQA scheme that forms part of the Fortress Quality Control Platform. EQA helps to assure customers, such as physicians, patients, and health authorities, that the laboratory can produce reliable results. Individual laboratories can use EQA to identify problems in laboratory practices, allowing for appropriate corrective action. EQA participation will help to evaluate reliability of methods, materials, and equipment, and to evaluate and monitor training impact.



SEQAS

Specialised External Quality Assessment Service

For laboratories performing public health-related testing, EQA can help to assure that results from different laboratories during surveillance activities are comparable. EQA participation is usually required for accreditation. Samples received for EQA testing, as well as the information shared by the EQA provider, are useful for conducting educational and professional development activities.

Participation in an external quality assessment program provides valuable data and information for the laboratory which:

- allows peer comparison of performance and results among different test sites;
- provides early warning for systematic problems associated with kits or operations;
- provides objective evidence of testing quality;
- indicates areas that need improvement;
- identifies training needs.



A fast easy-to-use data capture system



Data analysis that is easy to understand & interpret



Monthly cycles for a range of programmes



End of cycle reports



Certificates of registration

SEQAS Programmes

Description	Cycle	Cat No.	Size
SEQAS External Quality Assessment Programme		SEQAS00P	
SEQAS Monthly Clinical Chemistry (Jan-Dec)	1 Cycle = 12 Months (1 Sample/Month)	SEQAS001	1 x 12 x 5ml
SEQAS Monthly Immunoassay Programme (Jan-Dec)	1 Cycle = 12 Months (1 Sample/Month)	SEQAS002	1 x 12 x 1ml
SEQAS Haematology Programme (Apr-Mar)	2 Cycles = 12 Months (1 Sample/Month)	SEQAS003	2 x 6 x 3ml
SEQAS Monthly HbA1c Programme (Jan-Dec)	1 Cycle = 12 Months (1 Sample/Month)	SEQAS004	1 x 12 x 0.5ml
SEQAS Monthly Coagulation Programme (Jan-Dec)	1 Cycle = 12 Months (1 Sample/Month)	SEQAS005	1 x 12 x 1ml
SEQAS Monthly Lipids Programme (Jan-Dec)	1 Cycle = 12 Months (1 Sample/Month)	SEQAS006	1 x 12 x 1ml
SEQAS Monthly Cardiac Programme (Jan-Dec)	1 Cycle = 12 Months (1 Sample/Month)	SEQAS007	1 x 12 x 2ml
SEQAS Monthly Blood Gas & Electrolytes Programme (Jan-Dec)	1 Cycle = 12 Months (1 Sample/Month)	SEQAS008	1 x 12 x 2ml
SEQAS Monthly Specific Protein Panel Programme (Jan-Dec)	1 Cycle = 12 Months (1 Sample/Month)	SEQAS009	1 x 12 x 1ml

Fortress Quality Control Inserts Portal

Download e-inserts for the Fortress Diagnostics Quality Controls & Calibrators range through our online portal.

Fortress Diagnostics are excited to launch the new Fortress QC Inserts Portal. The portal allows customers to easily search our database of inserts by product name, catalogue number or batch number in our easy-to-use filter tool. Inserts can be viewed online or downloaded in PDF format.

 insert.fortressdiagnostics.com



Terms & Conditions

1. General

All quotations made, all orders accepted, all goods sold, all service and advice rendered are subject to these conditions and to the exclusion of any previous conditions of purchase. Any variations to these must be expressly accepted by us in writing.

2. Specifications

We reserve the right to supply goods to the specification and/or design current at the date of dispatch. We cannot accept a request for goods as previously supplied as binding.

3. Admin & Handling Charge

An admin & handling charge of £25.00 will be added to all orders.

4. International Bank Charges

For international orders a £15.00 international bank charge will be added to all BACS payments unless the customer agrees to pay these charges at their end.

5. PayPal/Credit Card Transactions

We accept PayPal, credit card and debit card payments. There is a 3.5% PayPal processing fee added to all customer orders who choose to pay via PayPal this will be detailed on your invoice. This is the same charge that Fortress incur to receive this method of payment.

6. Prices

Although we take great care to ensure price stability, we reserve the right to change prices without notice. Goods will be invoiced at the prices valid on the date of confirmation of the Buyer's order. All prices given are exclusive of VAT unless otherwise stated.

Fortress Diagnostics cannot accept responsibility for typographical errors in pricing within our catalogues, advertising literature or quotations.

Prices quoted are "Ex Works" (Incoterms 2010). Freight, insurance and all other respective costs e.g. Certificate of origin, legalised and notarised documents will be invoiced separately.

7. Delivery

Goods are shipped or dispatched at Buyer's risk. Our standard dispatch dates are 21 days after orders are confirmed and paid in full (unless you have credit terms).

Delivery times quoted are to be treated as an estimate only and Fortress Diagnostics shall not be liable for any failure to deliver within such times whether a time for delivery be quoted or not. We shall not be held responsible for delays caused by anything beyond our reasonable control. Any special delivery requirements must be notified to us in writing at the time of placing the order.

We shall have the right at our discretion to make a reasonable charge for special handling and/or delivery.

The Seller is entitled to make delivery in instalments unless such delivery would be unreasonable or unless otherwise agreed upon and confirmed by the Seller in writing. In the case that a fixed period for delivery is agreed upon and the Seller is in default with the supply, the Buyer shall grant the Seller a reasonable additional period of time, normally of 4 weeks.

8. Order Additions

Any additions will result in a new order being created in line with our standard delivery terms. Where possible we will attempt to dispatch your order additions with your original order but cannot guarantee this.

9. Damage/Loss/Shortage

No claim for breakages or missing goods can be recognised unless notified to Fortress Diagnostics and the carriers within 72 hours of receipt of the goods. If damages or shortages are immediately apparent upon delivery please:

1. Notify the carrier when signing for receipt of the goods.
2. Advise Fortress Diagnostics customer services team as soon as possible.

In the case of non-delivery of a complete consignment notification must be received by us within 10 days of invoice date.

10. Return of Goods

Notification of returns must be made within 1 week of receipt of goods. Goods which have been received damaged or in error must be held in the correct storage conditions.

Do not return the goods until you contact our customer services team for a returned goods authorisation number. Clearly mark the authorisation number on the package to ensure your goods can be speedily processed.

You will appreciate that we cannot accept responsibility for loss or damage to goods being returned to us unless we arranged collection. If the mistake was ours there is of course no charge to you. However, if the goods were incorrectly ordered an administration and re-stocking charge of 25% of the invoice value excluding VAT is chargeable. Temperature controlled products incorrectly ordered will not normally be accepted for return.

11. VAT

We are required to charge VAT on all UK orders at the current VAT rate.

For organisations that are VAT exempt each order must be accompanied by an exemption certificate unless special arrangements have been made in writing. Under circumstances where a VAT exemption certificate does not accompany an order we are obliged by law to charge VAT. If subsequently you reclaim a VAT credit it must be completed within 30 days of invoice date.

12. Payment Terms

Payments are to be made within the agreed payment terms set with our customers. We may at our discretion charge interest at the rate of 5% above the base lending rate of Barclays Bank plc on all overdue accounts to the date of actual payment. Payment in advance or financial guarantees may be requested from customers who do not have an account.

13. Quotations

Quotations are valid for 30 days.

14. Cancellation

Orders may not be cancelled without our prior written agreement and may be subject to a cancellation charge. Standing orders must be cancelled in writing at least 8 weeks prior to what becomes the last shipment date.

15. Liability

Fortress Diagnostics' liability for any loss or damage suffered by you and arising by way of defects in the goods or otherwise, howsoever shall be limited to the invoice price of the goods in respect of or in relation to which loss or damage is claimed. Our liability under this clause shall be in lieu of any warranty or condition implied by law as to the quality or fitness for any particular purpose of the goods and save as provided.

16. Ownership

All goods remain the property of Fortress Diagnostics Limited until payment is received in full. The responsibility for insurance and care of goods, including 3rd party risks lies with the purchaser.

17. Health & Safety

All products sold by Fortress Diagnostics Limited, should be handled by qualified personnel, exercising care during handling, usage and disposal. For further information please contact Fortress Diagnostics Limited.

Control of Substances Hazardous to Health 2002 (COSHH)

All Fortress products are developed and designed for 'IN VITRO' use only.

COSHH safety data sheets are available for all products on request.